

5230 Series Regulator

Single Stage

Brass Barstock Body

Four-Port Configuration

316L Stainless Steel Diaphragm

Liquid Cylinder or Line Use



Advanced Features

- *Brass barstock body*
Smooth surface finish
- *Rear panel mountable*
Easy installation
- *Pressure ranges 0-100 to 0-500 PSIG*
Broad range of applications
- *3000 PSIG inlet pressure rating*
Safe for use with high pressure cylinders
- *Capsule® Seat*
Increased serviceability and life
- *316L Stainless Steel Diaphragm*
No inboard diffusion
- *Low Wetted Surface Area*
Minimal purge requirements
- *Field Adjustable Pressure Limit*
Safeguard downstream equipment

The 5230 Series regulators are intended for primary pressure control of laser gases supplied from cryogenic liquid cylinders or other low pressure sources where pressure fluctuations can be accepted.

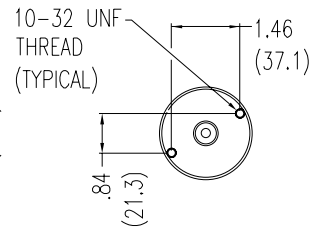
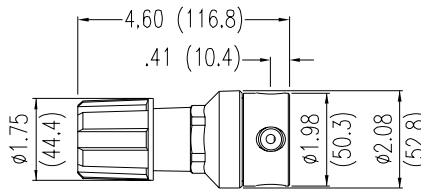
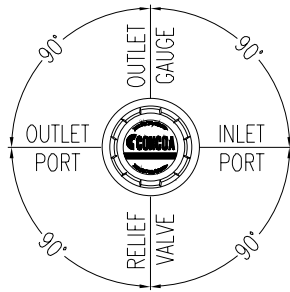
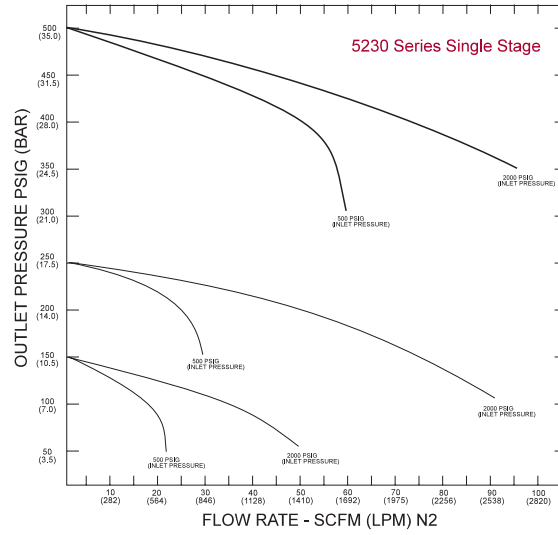
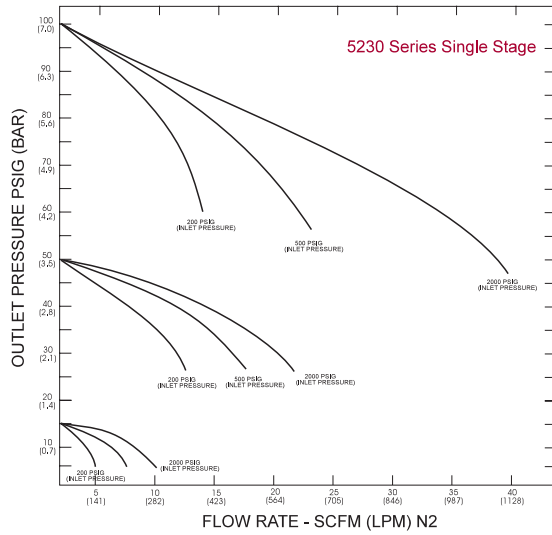
Applications

Materials

Specifications

<p><i>Laser Gases from Liquid Cylinders</i> Nitrogen Carbon Dioxide</p> <p><i>Laser Gases from Pipeline</i> Nitrogen Helium Carbon Dioxide</p> <p><i>Assist Gases from Cryogenic Sources</i> Nitrogen Oxygen</p>	<p><i>Body</i> Brass barstock</p> <p><i>Bonnet</i> Chrome-plated die cast zinc</p> <p><i>Seat</i> PTFE Teflon®</p> <p><i>Filter</i> 10 micron sintered bronze</p> <p><i>Diaphragm</i> 316L Stainless Steel</p> <p><i>Internal Seals</i> PTFE Teflon®</p>	<p><i>Maximum Inlet Pressure</i> 3000 PSIG (210 BAR)</p> <p><i>Temperature Range</i> -40 to 140°F (-40 to 60°C)</p> <p><i>Gauges (PSI/BAR)</i> 2" diameter dual scale brass</p> <p><i>Ports</i> ¼" FPT</p> <p><i>Helium Leak Integrity</i> 1 x10⁻⁸ scc/sec</p> <p><i>Cv</i> 0.2</p> <p><i>Weight</i> 2.8 lbs. (2.16 kg)</p>
----------------------------------------------------------------------------------------------------------------------------------------------------------------------------------------------------------------------------------------------	----------------------------------------------------------------------------------------------------------------------------------------------------------------------------------------------------------------------------------------------------------------------------------	--------------------------------------------------------------------------------------------------------------------------------------------------------------------------------------------------------------------------------------------------------------------------------------------------------------------------------------------------------------------

Flow Performance Curves



Ordering Information

Series	Part Number	Inlet CGA	Delivery Pressure	Gas Service	Outlet
5230 Liquid Cylinder	1806-5235	CGA 580	0-500 PSIG (0-35 BAR)	Inert Gases (Nitrogen, Argon or Helium) Oxygen Carbon Dioxide	¼" Tube Stainless Steel compression fitting
	1806-5236	CGA 540	0-500 PSIG (0-35 BAR)		
	1806-5231	CGA 320	0-500 PSIG (0-35 BAR)		
5230 Line Use	1806-5230	¼" Tube	0-500 PSIG (0-35 BAR)	Any Non-Corrosive Gas Any Non-Corrosive Gas Any Non-Corrosive Gas	¼" Tube Stainless Steel compression fitting
	1806-5232	¼" Tube	0-250 PSIG (0-18 BAR)		
	1806-5233	¼" Tube	0-100 PSIG (0-7 BAR)		
		<i>International fittings are also available.</i>			

Related Options

Option	Order No.	Description
Laser Gas Stations	See Page 24	Convenient regulator wall mount, including tee, bracket and flexible stainless steel pigtail with check valve in the inlet gland (Check valve not available on CGA 680 inlet models)
Laser Panels	See Page 25	Three Gas Panel delivery systems for the Laser Gases (Helium, Nitrogen and Carbon Dioxide)
Purge Devices	See Page 44	Tee and Straight Purge configurations to satisfy all requirements